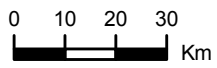
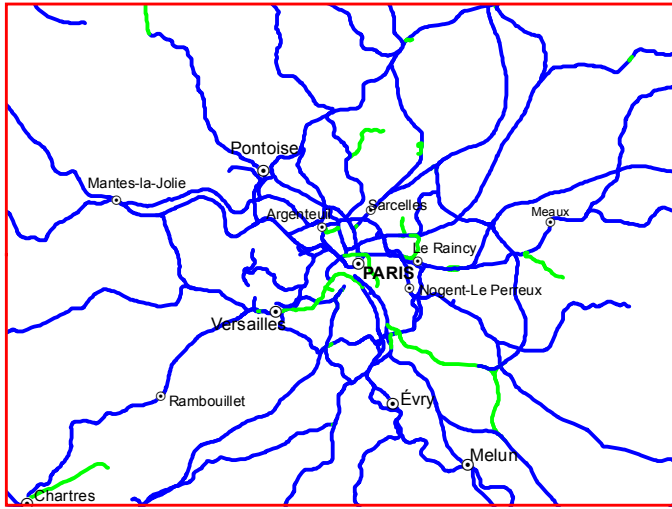
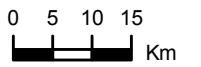
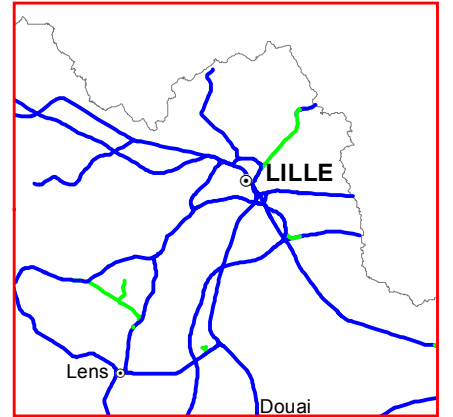


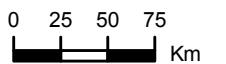
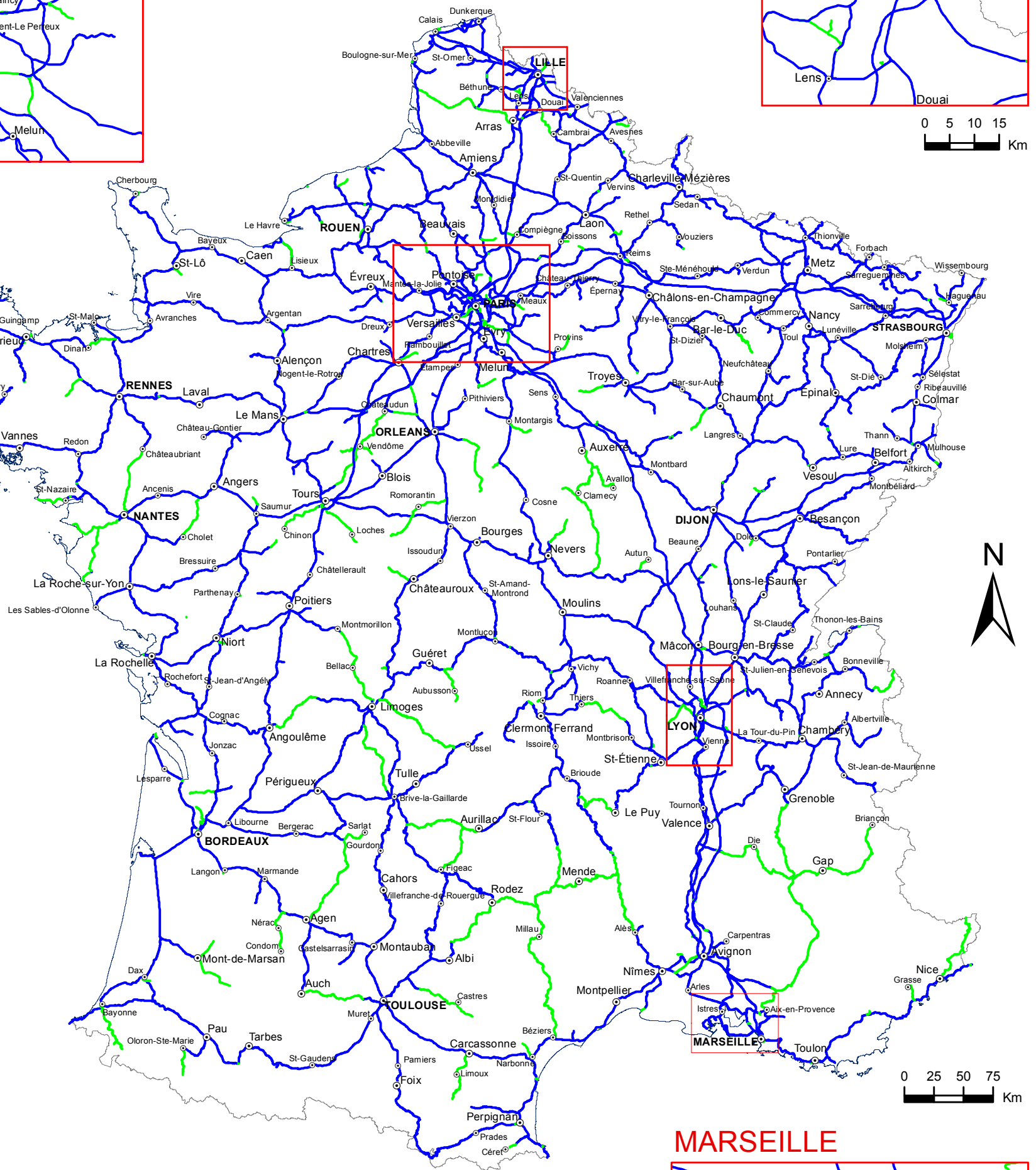
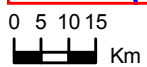
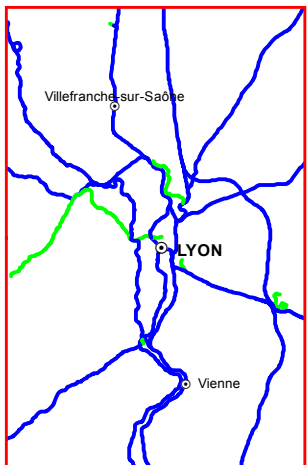
#### PARIS



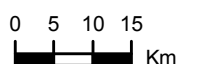
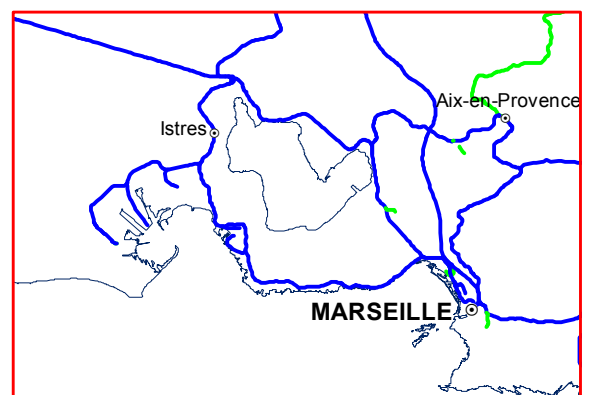
#### LILLE



#### LYON



#### MARSEILLE



- 20t/essieu (catégorie C4) / 20 tons per axle (category C4)
- 22,5t/essieu (catégorie D4) / 22,5 tons per axle (category D4)

Cette carte, à valeur indicative, a été élaborée en septembre 2016. Les données les plus à jour sont consultables dans la base de données RÉSEAU.

This map, of indicative value, was issued in septembre 2016. The most up-to-date data is available in the « RÉSEAU » database.

Sources : RÉSEAU - RGI 2016 / BD Carto © IGN Paris - 2001